

Notes. 17 Feb 1981

See VHLC register VA Landmarks Register.

Brentsville Courthouse is similar to Roman-revival or

"Jeffersonian-style" courthouses in

the middle piedmont section of Virginia:

1. Albemarle County Courthouse - p. 115 (orig. part 1803).  
Note modillion cornice and octagonal cupola.
2. Fluvanna County Courthouse (1831) "Classical Revival" arch.  
Tall portico, heavy moulded cornice. Engaged columns along sides.
3. Brookland County Courthouse - p. 120 (1826) "Jeffersonian-style". See also jail (similar to B'ville jail). Jail has a moulded cornice w/ gable pendants, round-arch windows + doors.

See also Christ Church glendower in Albemarle County (1831)

4. Greene County Courthouse. (p. 123) (1838) Jeffersonian-style.

(1800)

See also Fairfax County Courthouse<sup>^</sup>. Has an octagonal cupola on a square base, a 3-bay front (though with 3 arches). Reflects transition from Colonial to Roman Revival. B'ville Court house probably had a moulded cornice, perhaps full entablature. May have had a pedimented gable. The door and window arches were possibly stuccoed to look like ashlar.

5. Madison County Courthouse. "Jeffersonian-style"  
(1828) Octagonal cupola.

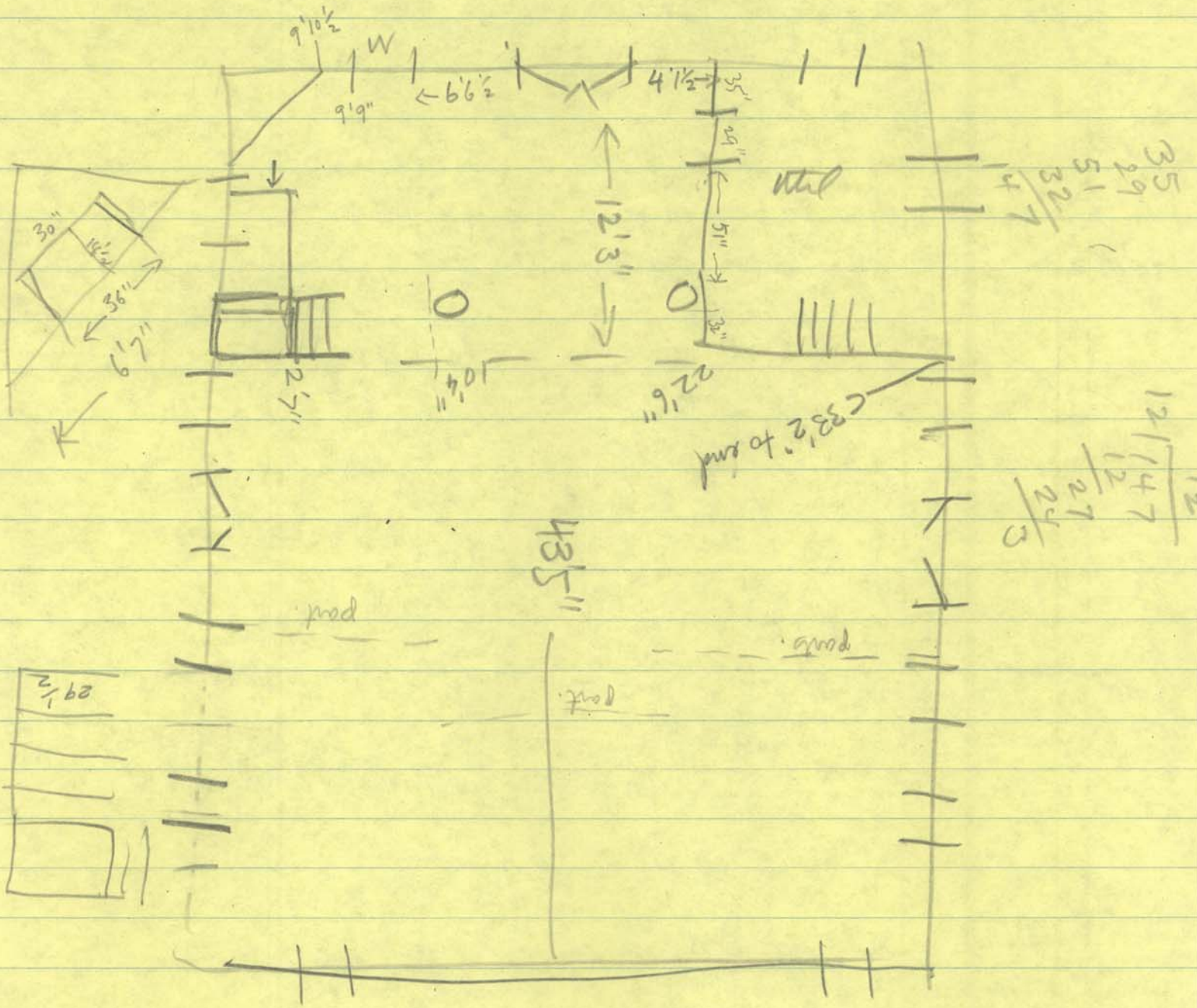
6. Rappahannock County Courthouse, Washington. p. 132  
(1833) Rectangular cupola. Moulded cornice.

front elev. f

Windows 13" deep.

front door a repl.

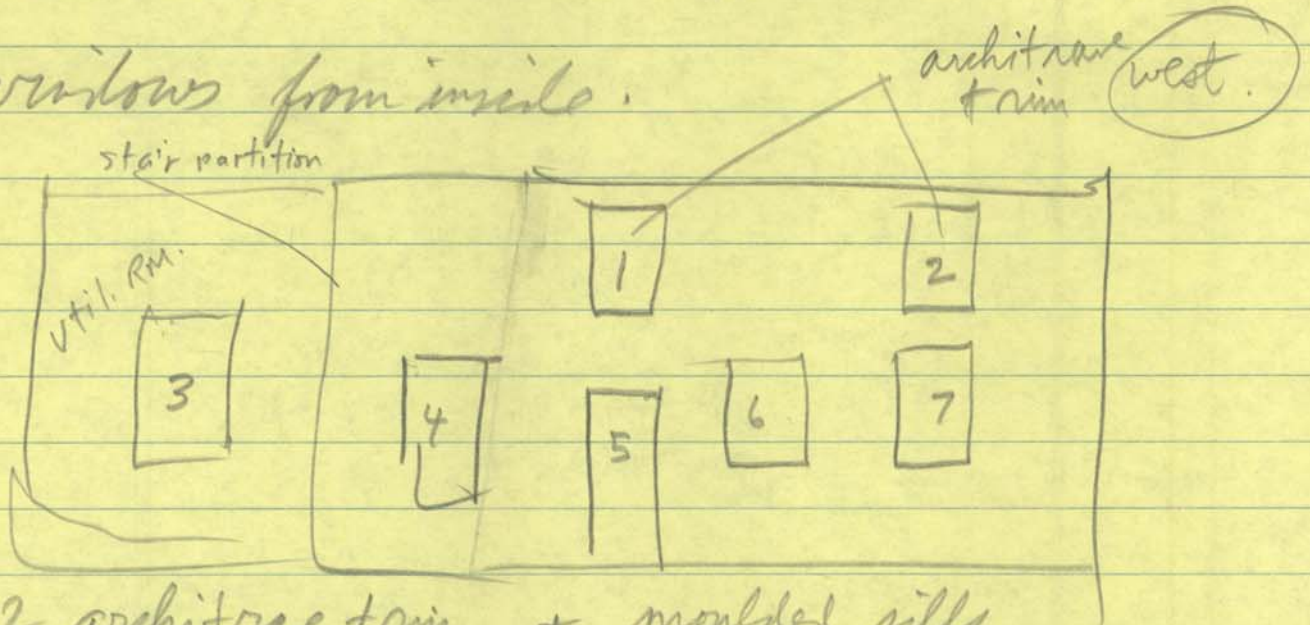
trim is moulded, on both door + window.



Brick hearth, no mantel, interior cemented over

# Church House Interior cont.

Windows from inside.



1 + 2 architrave trim + moulded sills,  
with plain <sup>paneled</sup> casements. 6/6

3 + 7 architrave trim with paneled + moulded  
casements. Trim is more ornate.

4 + 6 plain box trim, plain casements.

5 - door - architrave trim like 3 + 7  
door replacement.



flat, cyma, bead

walls plastered up to trim.

Concrete floor w/ tile over,  
no basement

bldg is braced by 2 steel tie rods  
attached to wall w/ square plates

drop light fixtures.

one tie rod, front to  
end of balcony.

4-28-80

# Brentsville Courthouse

sandstone foundation, well-shaped  
roughly coursed.  
brick walls. laid in

E, N, W 3 course Amer

S: Flemish

BH

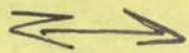
WH

Well

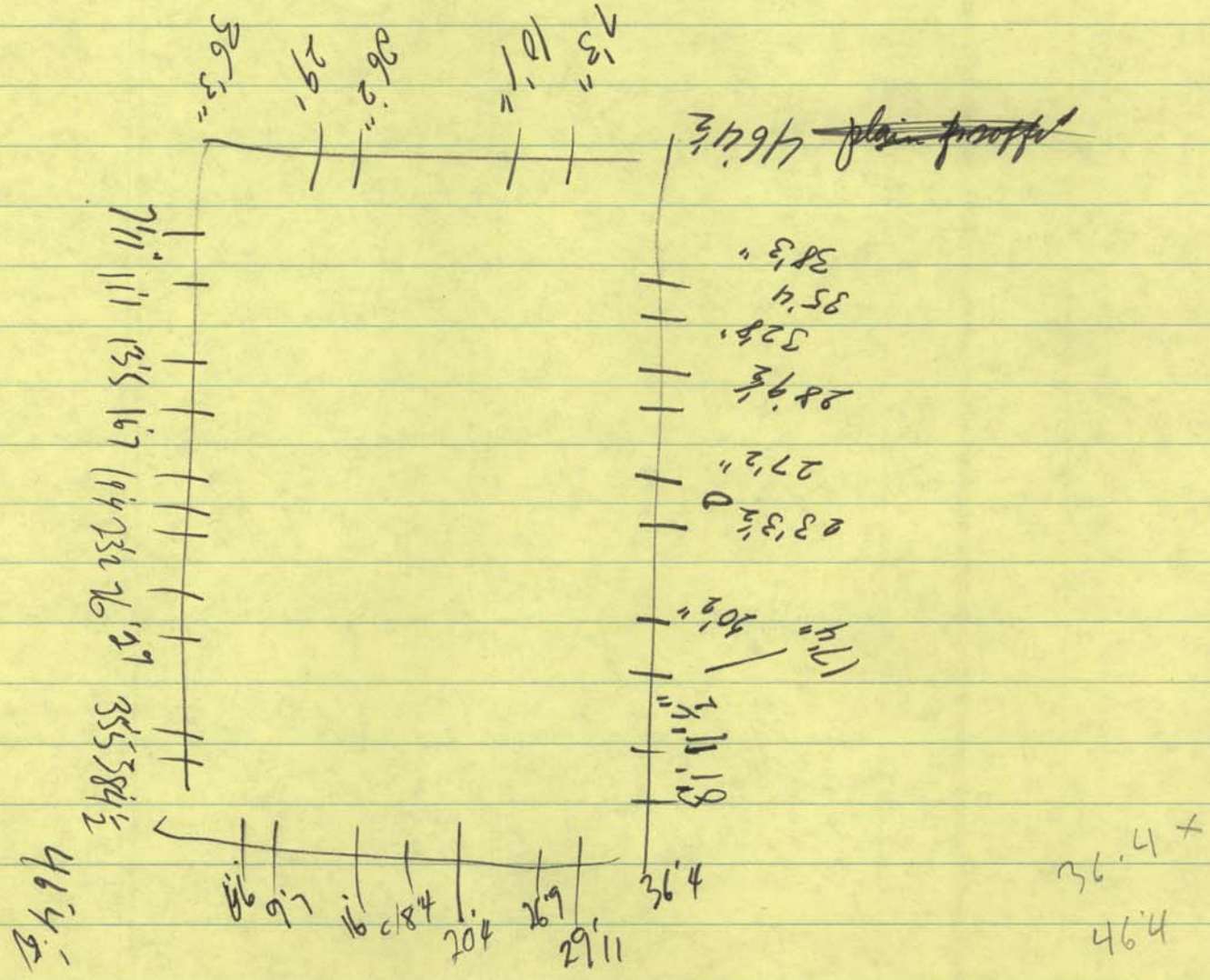
UH

JAIL

PKg.



patio w/ stepping stones inlaid in  
concrete at front of bldg. measures 14'8" x 31'6"  
inst. in 1976. 3-26-76  
replaced stone walk.



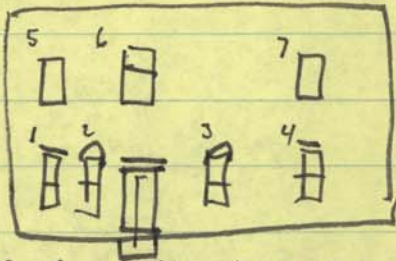
Shutter pins all  
arrd. ? NO

Genl. ext. (court house)

bricks sand blasted? (looks so.) + repointed (badly)

plain soffit, brick patterned cornice (dentiled) w/ moulded  
bricks

West side.



only two windows beside door line  
rounded arches, all others + door have  
flat arches.

Recessed double door flanked w/ moulded panels  
door is replacement. - knob may be old.

1/6 sl. stsh. "quarter round" moulding

Stone sill - chiseled to accept doorway

air vents at ground level may have been blocked up.

2 + 3 have wooden ~~br~~  
sills + applied

(cyma trim. +  
NO shutter pins

1, 4, 5-7 have  
shutter pins +  
quarter round mould,  
Stone sills

south side

6/6



prob. retouched - Looks like letters are  
painted on.

brick  
Keyed, semi-c. arch w  
fan light. double door,  
recessed mouldings. orig. sash?  
Windows have flat arches,  
Stone sills; quarter round moulding  
shutter pins

old worn stone sill  
but inserted in as a step.  
IS poured concrete.

replacement door  
prob 4 1/2" or so shorter  
than orig doorway

east wall courtyard.

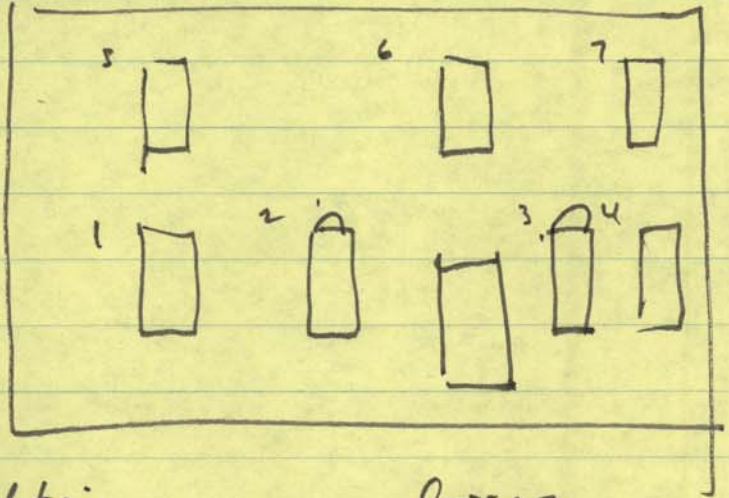
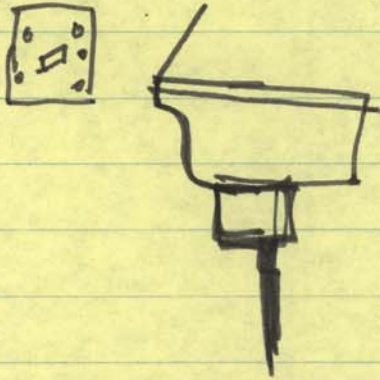
bad crack been patched on south end below + above windows from top to bottom.

6/6 sash.

**TIE RODS**

2 iron or steel

joint plates run along wall ~~at~~ under cornice

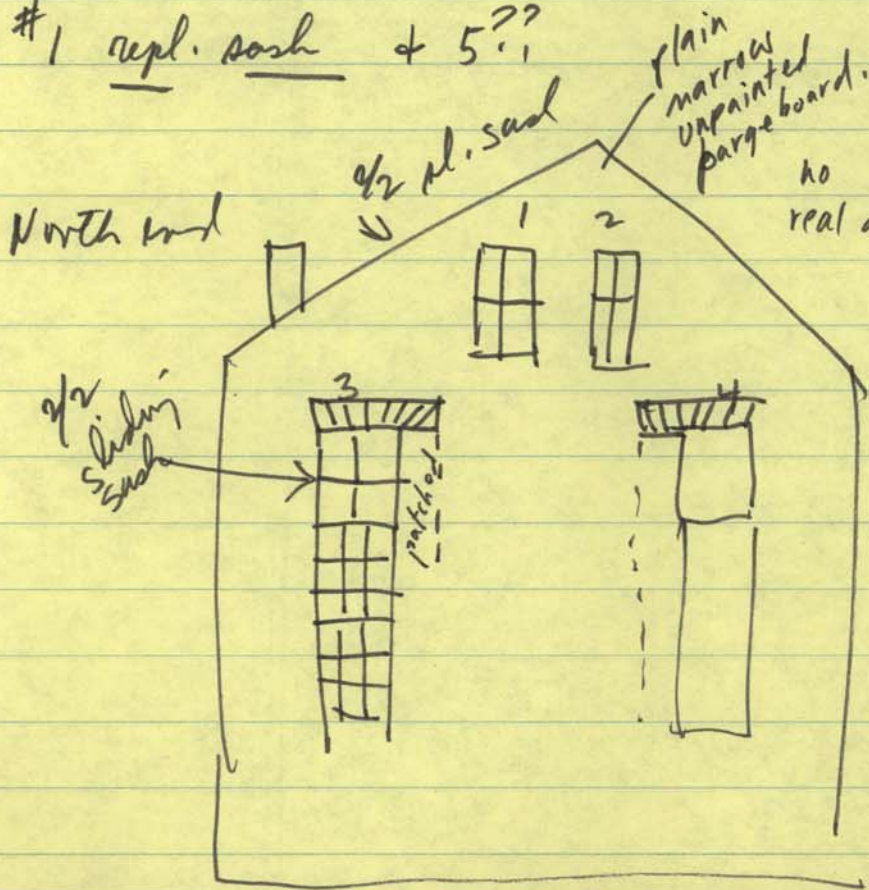


1, 4, 5-7 windows - stone sills  
flat arches, shutter pins, quarter round trim.

2, 3 - brick sills, rounded  
arches, cyma trim

door way.  
stone sill, quarter round  
mouldings,  
recessed moulded ~~door~~  
replacement doors

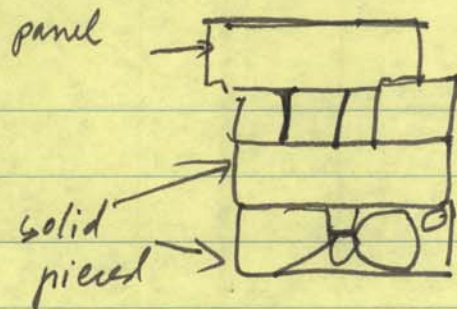
#1 repl. sash + 5??



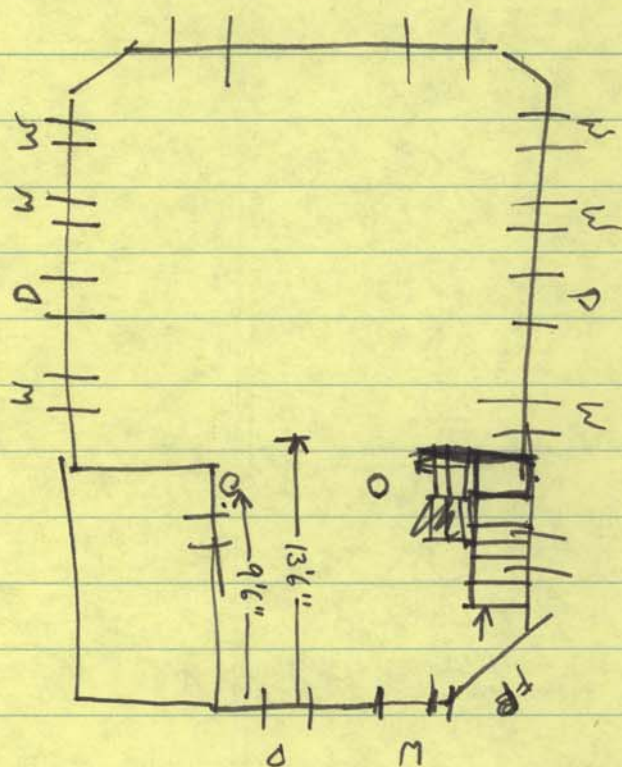
1, 2 1/2 victorian  
windows. sl. sash.  
wooden sills.

3, 4. s. beaded trim,  
extra long w.  
brick sills  
patched under jack arch

walls 1'6 1/2" thick.



Interior:



large 2-story square room with a balcony second story east on the south end reached by a double staircase rising on either side of front entrance. offices are located on the balcony.

Changes include (probably) in the 1880s or 90s the installation of the stair and balcony floor. Installation recently of central heating + air cond. (ducts are visible under ceiling of mezzanine. 1 stair (west side) been blocked)

Floor = asphalt tiles.

Painted white w med/l. blue trim.

Front entrance is flanked by 2 plain stone columns supporting a beam which holds the balcony up.

Columns are 9'6" from front wall - c 1 foot in diameter

on a 1" [plinth base] ?? **yes.**

columns become slender

as they rise + have a moulded capital.

Stair is closed 2-flights, 1 landing. newel is small moulded with a square post + a ball atop it. has a moulded rail rail across mezzanine has turned bal. c 1890's moulded rail. square moulded support posts.



stair has. nosed treads risers = 7" Treads = 9½"

- Cyma baseboards some repl. esp. around ground floor level.

stair has some older cyma basebd.

windows are recessed moulded paneled.

sills 1" deep.

2d floor. — 2 offices  
architrave trim around doors, windows.

Court house.  
& School.

Brentsville.

Map Ref 66-1-58

c 2 acres

see Deed 51-40-1

86,715 \$

restored 1968.  
In 1979 deeded by gift from Bd. of Super. to (769-71)  
PWC Park Authority (1074-517)

Brentsville - acts of the Va Assembly 1821

Chapter 93 p. 69.

An act establishing a Town at the Court-house  
of Prince William. passed 23 Jan 1822.

1. 50 acres of land at the courthouse of P. W.

Trustees: John Macrae, John Gibson, Bevard  
Alexander, W<sup>m</sup> S. Alexander.